



# Avid Deko 3000

Real-time graphics with 2D, 3D, clip, and audio effects



Take your on-air graphics capabilities to the highest level with the Avid® Deko® 3000 system. Its rich palette of visual capabilities include 2D and 3D data-driven charts and graphs; real-time 3D Motions; "Auto-Motion" graphic transitions; and true 3D model FBX and Collada import—all easily composited with live, editable Deko text and images. Avid Deko 3000 is available in SD, HD, or Hybrid configurations and all Deko models can be upgraded to this most powerful system.

## Avid Deko 3000 Options

**Automation** Data interface to popular newsroom systems using the Intelligent Interface communications protocol; includes Timecode control and access to popular SQL databases

**FastAction Keyboard** Built for the fastest, most reliable live production and newsroom layout

**ClipDeko** an internal clip database that can import, record, and play video clips with key and audio, and includes browse, preview, trim and loop controls

**Cel Animation** Import and cycle file series such as .tga or .tif for animated bugs and logos

**Deko Select** allows journalists to add text, stills, and clips to pre-defined templates and preview the graphic from the newsroom computer system; the iNEWS® Command controls playback for Deko channels

**Thunder Browse for Deko** Provides additional offline still image management of Avid Thunder® database; create graphics from Avid Deko and save directly to database

**DekoObjex** create and play back persistent, object-based elements for news crawls, tickers, promos, and time/temperature applications ; several plug-ins enable easy data gathering

**Effects Option Pack** Includes timeline interface for Motion creation; Cel Animation Player for looping bugs; Pan and Scan for zooming into large textures; and additional 3D DVE-style effects including 3D ripple, and page scroll

The Avid Deko 3000 system provides a rich set of tools for efficiently defining and delivering compelling broadcast branding, with time-saving features such as Deko Select templates and file associations. Sophisticated 3D animations can be designed once and then used in multiple graphics with customized text and images. Content-independent motions automatically adjust to changing text, and Avid Deko 3000 supports the incorporation of sound effects linked to layer, row, word, or character motions to further differentiate and reinforce your station's programming and identity.

## Mission-critical performance

Deko 3000 is designed for mission-critical live-to-air environments, including national news, cable programming, remote sports events, live awards, and game shows. It's the only solution engineered for high-profile SD and HD broadcasts that depend on speed, highest quality looks, and optimized workflow.

## Easy 3D workflow

Deko 3000 systems let broadcasters import FBX and Collada 3D models from industry leading tools like Autodesk 3ds max and Softimage, and Maxon Cinema 4D. Deko text and images automatically map and animate with the 3D model, but remain a live and editable element of layout.

## Automation-ready templates and effects

Advanced composition tools include text that fits-to-fill a layer boundary and auto-branding frames that apply for every manual or automated text entry. Fast design changes to news and sports "looks" for consistent style and greater productivity are a snap. Deko "Auto-Motions" allow automatic, back-to-back transitions of any graphic, in any order as an optimized playback process.

## Independent clips and scenes per channel

With Avid Deko 3000, each channel can display different clips or different DekoObjex scenes. Animate lower-third formats in one channel and full-screen templates in another—or display tickers, bugs, cel animations, and clocks in separate channels. Play back multiple SD or HD clips per channel with Motion Timeline control, transitions, and 2D scaling—plus fills, moving keys, and static mattes with infinite and 3-point loop capability.

## Innovative multi-format compose

Avid Deko 3000 is available in SD, HD, and Hybrid configurations and provides intuitive tools for working simultaneously in multiple formats and aspect ratios. The Deko 3000/ Hybrid can generate and output native, real-time HD or SD graphics and effects, switching between the two with a simple software setting. Multi-aspect composition allows simultaneous production of multiple HD and SD formats and aspect ratios.



**Avid Deko 3000 back panel**

## System Specifications

### Turnkey System Specifications

- Platform: SD: 3.2 GHz Intel Xeon T (or faster)
- HD: 3.2 GHz Intel Xeon T (or faster)
- Operating System: Windows XP Professional
- RAM: SD/HD/Hybrid: 2GB
- Internal storage: 300 GB or larger
- Storage: DVD+R/+RW writer
- Ethernet: 1000 BASE-T (RJ-45)
- Ports: 1 serial RS-232 (DB9),  
4 USB 2.0  
COM Ports: (1) RS-232 from  
motherboard and (6)  
RS-422 from Blastronix card

### Physical Dimensions

- 4RU rack mount chassis
- Height: 7 inches (17.78 cm)
- Width: 19 inches (48.26 cm)
- Depth: 22 inches (55.88 cm)

### Power specifications

- Dual redundant hot-swappable power supplies
- 110/220 Volt 60/50 Hz (auto-sensing)
- 400 watt maximum output

### Supported video standards (software configurable)

- Deko 3000 and 3000/Hybrid only:
  - Standard definition NTSC, PAL  
(both 4:3 and 16:9 supported)
- Deko 3000 HD and Deko 3000/Hybrid:
  - 1080i/60, 1080i/59.94, 1080i/50,  
720p/60, 720p/59.94, 720p/50

### Video I/O

- Standard definition
  - SDI video and key input per channel –  
SMPTE 259M compliant
  - Automatic retiming of synchronous inputs
  - SDI video and key output – SMPTE  
259M compliant

- Standard 10-bit, 4:2:2:4 sampling
- Preserves VBI data
- Single or dual channel configurations
- High definition
  - SDI video and key input – SMPTE  
292M compliant
  - Automatic retiming of synchronous inputs
  - SDI video and key output – SMPTE  
292M compliant
  - Standard 10-bit, 4:2:2:4 sampling
  - Single or dual channel configurations

### Video Reference

- Standard definition
  - Analog color black
- High definition
  - Analog color black with 1080i/59.94,  
720p/59.94, 1080i/50 or tri-level sync

### Downstream Keyer

- 10-bit video and key resolution
- 1 frame processing delay for interlaced,  
2 frame for progressive formats through box

### Audio I/O

- Standard definition
  - Standard 20-bit, 48 KHz sampling
  - 8 channels of audio output embedded per  
SDI video output
- High definition
  - Standard 24-bit, 48 KHz sampling
  - 8 channels of audio output embedded per  
SDI video output

### ClipDeko Option

- Independent control of clips on each  
program channel
- Real-time 2D size and position of clip layer
- Looping clip playback capability

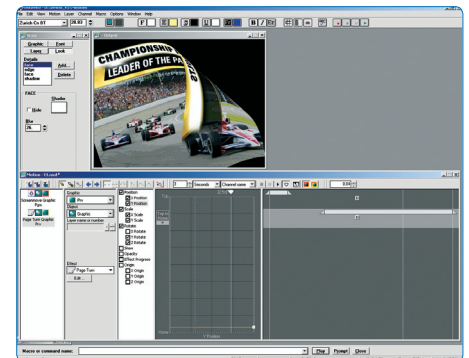
### Clip capture and playback support

- Standard definition
  - MPEG-2 I-Frame (25 Mbps),  
.mxf file format
  - QuickTime format supported through  
import.
  - Up to two clips with key simultaneous  
per system
- High definition
  - MPEG-2 I-Frame, up to 100 Mbps,  
.mxf file format
  - QuickTime format supported  
through import.
  - Up to two clips with key simultaneous  
per system

System specifications subject to change.

## Avid Total Services

Providing faster return on your investment by getting your systems and personnel up and running quickly, maximizing workflow efficiency, and meeting your production schedules. To learn more about Avid Total Services, please visit: [www.avid.com/services](http://www.avid.com/services).



The Avid Deko 3000 Motion Timeline allows easy animation on text, images, and video clips with linked sound effects. Motion Behaviors can be solitary or they can react with on-screen layers, such as repel, attract, skew, dim, and brighten—without requiring complex key-framing. Effects are content-independent; so they work regardless of character count.

For more information visit [www.avid.com/deko](http://www.avid.com/deko)

Corporate Headquarters  
800 949 AVID (2843)

Asian Headquarters  
+ 65 6476 7666

European Headquarters  
+ 44 1753 655999