



# ISIS 7000

Enterprise-class real time media network



## Power to succeed

As a broadcast or post-production facility decision maker you face the real-world challenges of how to store, share and manage large quantities of digital media assets.

Downtime means lost revenue, lost audiences and clients who won't be back for more. So rock-solid reliability is a must have.

Multiple islands of storage mean costly management overhead, so you want to consolidate to a single high capacity, highly scalable system that can accommodate all the needs of your facility and accommodate future growth.

As a production manager, you are looking for a system that delivers the benefits of shared workgroups, while still empowering individual users with the kind of high performance and predictability typically associated with local drive arrays.

ISIS® 7000 uniquely delivers on all counts, combining high performance, scalability and availability with powerful yet simple to use management tools in an open architecture.

## Unparalleled performance

Effortless real time performance and efficient bandwidth delivery set ISIS 7000 apart. With each ISIS 7000 Engine providing up to 400 MB/s of useable bandwidth, predictable, performance is sustained even as client counts increase, up to 8 GB/s aggregate with 20 Engines – easily meeting the challenge of large installations or the most demanding and ambitious uncompressed HD real-time workflows. That's a key reason why ISIS 7000 is the ideal media network foundation for any content creation enterprise.

## Smarter storage

In addition to high performance storage, ISIS 7000 can efficiently handle temporary, longer term, and less bandwidth-intensive needs. For configurations of up to 12 Engines, ISIS RAID 6 is exceptional data protection technology that yields 50% more capacity than ISIS Mirroring at no additional cost. Both ISIS Mirroring and ISIS RAID 6 data protection can be deployed in a single ISIS 7000 system for optimal, cost-effective management of every on-line storage and access need.

## Exceptional expandability

ISIS 7000 is based on a highly scalable, self-balancing, distributed architecture. Each storage blade includes its own processor, so when you add capacity, you also add intelligent processing power.

- Client scalability. With the tested and proven ability to scale up to 330 real-time clients, you can rely on ISIS 7000 as your workflow or facility grows. From editors to loggers, journalists and producers, media assets are now easily accessible to users across the enterprise.
- Asset scalability. ISIS 7000 expands to 640TB raw capacity, or 320TB usable with ISIS Mirroring data protection, enough capacity to store up to 1040 fully protected hours of uncompressed HD, or 20,830 hours of 50 Mb/s compressed HD.
- Gateway access. For non-real time storage needs such as graphics, stills, text or low-res video, any Windows, Mac, or Linux workstations across the enterprise can utilize ISIS 7000 storage through the ISIS File Gateway.

## Protect your business

The ISIS 7000 Engine runs the distributed ISIS File System through a unique combination of dual-drive server-storage blades, integrated Ethernet switch blades, and no-compromise, purpose-built engineering. ISIS 7000 sets industry benchmarks for drive vibration and cooling efficiency, and provides hardware, media, metadata, and network redundancy. Built-in system-wide health monitoring signals any point of failure. ISIS 7000 Engines, storage blades, switch blades, and power/cooling modules can be easily added, removed, or hot-swapped while the system is live. The system automatically adapts to component failures and replacements - while work continues without delay.

Unlike common storage area networks (SANs) the advanced ISIS File System architecture distributes data and metadata so that each intelligent storage element can make instant decisions that collectively optimize the performance, capacity, and health of the entire system. Complementary redundancy across all components provides an unprecedented seven layers of protection for uninterrupted availability and absolute reliability in high-pressure broadcast, post, or film production environments.

# Quality, Performance and Value – Input to Output.

## PERFORMANCE

- Work in resolutions up to HD-RGB uncompressed HD when using 10 Gb/s Ethernet clients (Windows and Mac), or Avid DNxHD® 220x/185x using 1 Gb/s Ethernet client (Windows and Mac)
- Support up to 330 simultaneous real-time editing clients with 400 MB/s per engine throughput and 8 GB/s (aggregate) with 20 ISIS Engines.

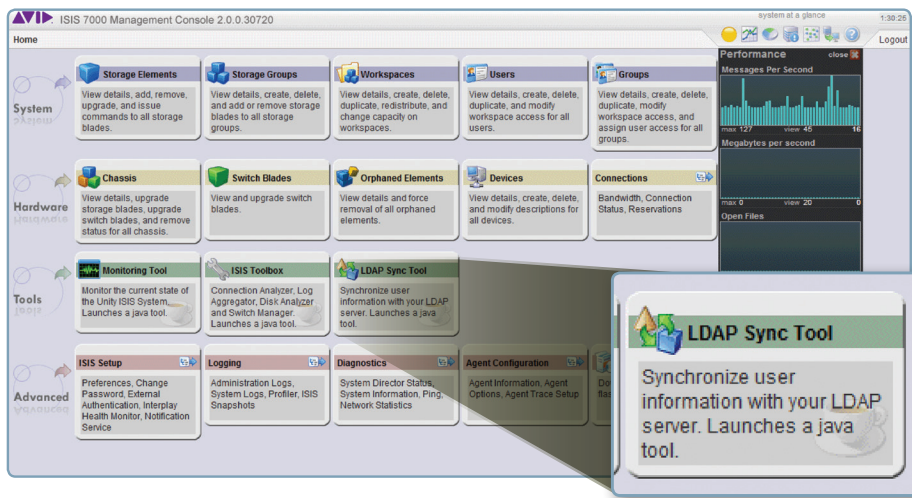
## SCALABILITY

- Scale raw capacity from 16TB to 640TB
- Scale Mirrored capacity from 8TB to 320TB; RAID 6 capacity from 12 to 288TB
- Scale client count up to 330 real-time clients

## RELIABILITY

- Protect critical data via redundant, hot swappable storage blades, switch blades, power modules, and System Directors
- Keep productivity uninterrupted with self-healing intelligent storage blades that automatically reconstruct data in the background while supporting essential real-time operations
- Minimize system vulnerability with ultra-fast drive rebuild that can be up to 20 times faster than conventional RAID techniques.

ISIS Management Console



The ISIS Management Console provides single starting point for all system functions, including storage and user management and system monitoring and management.

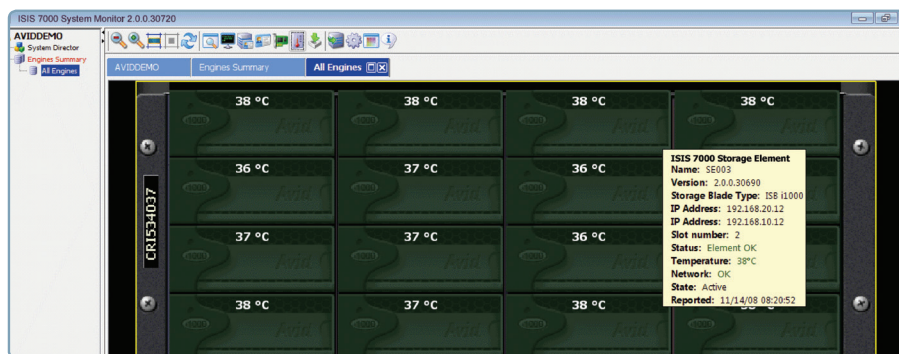
Minimize user management workload through LDAP (Lightweight Directory Access Protocol) synchronization

ISIS System Workspace Manager

Name	Capacity	Maximum	Protection	Used	Reserved	Unused	Status	Config Cha
Audio 1	4.00	3,515.05	mirrored	2.05	2.05	1.94		
Edit 1	32.00	3,543.05	mirrored	7.12	7.12	24.87		
Edit 2	16.00	3,527.05	mirrored	4.00	4.00	12.00		
Edit 3	64.00	3,575.05	mirrored	6.00	6.00	58.00		
Graphics	8.00	3,519.05	mirrored	2.72	2.72	5.28		
Ingest 1	32.00	3,543.05	mirrored	3.96	3.96	28.03		
Ingest 2	32.00	3,543.05	mirrored	2.27	2.27	29.72		
Promo	16.00	3,527.05	mirrored	7.27	7.27	8.72		
workspace	2.00	3,707.83	mirrored	0.00	0.00	2.00		

Respond easily to dynamic user needs by expanding or contracting user or group workspaces on the fly

ISIS Engine System Manager



The ISIS Monitoring Tool offers a photo-realistic view of the exact ISIS 7000 configuration with visual status and alert events, with point and click context-sensitive status and information on any component

For more information visit [www.avid.com/isis7000](http://www.avid.com/isis7000)

Corporate Headquarters  
800 949 AVID (2843)

Asian Headquarters  
+ 65 6476 7666

European Headquarters  
+ 44 1753 655999